



Hindhead

Price £665,000

OPEN SATURDAY AND SUNDAY - PLEASE CALL TO BOOK YOUR APPOINTMENT TO VIEW

Plot 11 ☒ A large two bedroom penthouse apartment.

Internal photographs are from the show apartment and a selection of other apartments.



OPEN SATURDAY AND SUNDAY - PLEASE CALL TO BOOK YOUR APPOINTMENT TO VIEW

Introducing Broom Heights. A unique development that has been created by Charles Lyndon Homes, to provide 12 beautifully designed one and two bedroom apartments. Steeped in history it has been sympathetically designed and extended to blend the old with the new, with contemporary interiors that compliments the original features of this late 19th century property.

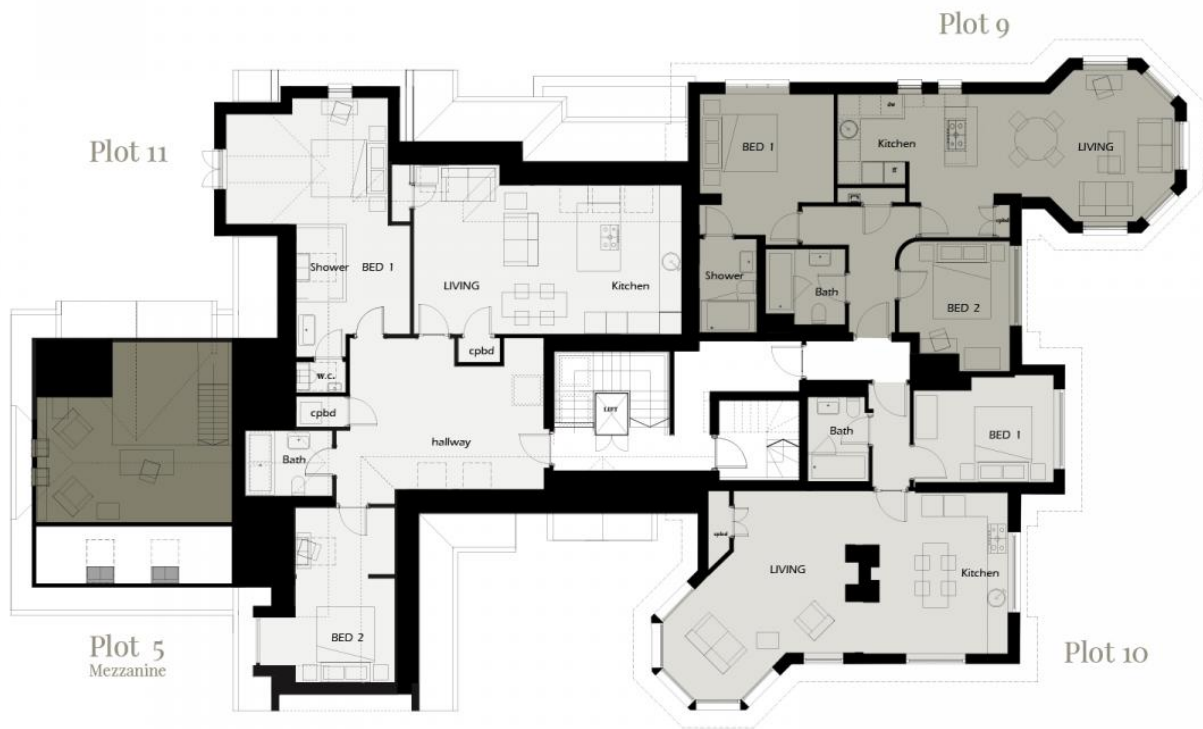
Plot 11 - A large two bedroom, penthouse apartment. Accessed either by the lift or stairs, the front door of this spacious apartment opens into a large welcoming entrance hall, where you have access to the open plan kitchen/living room, two bedrooms and family bathroom. Finished to the highest standard, the kitchen has been fitted with top of the range units by The Richmond Cabinet Company Ltd with integrated Bosch appliances. The master bedroom has a cleverly designed en-suite shower room with separated WC and Juliet balcony which overlooks the garden. The second bedroom also overlooks the garden and the family bathroom is stylish and modern. Set in generously sized landscaped grounds, situated in a wonderful semi-rural setting and close to local amenities.

- Stylish contemporary kitchen designed by The Richmond

Cabinet Company Ltd using their London Cabinets range.

- Integrated quality German Bosch appliances including; combination microwave oven, separate fan oven, fridge/freezer and dishwasher. Bora induction hobs, sink with stylish mixer taps by Roux Lifestyle.
- Neutral Karndean vinyl flooring to open-plan living area, kitchen, hallway and bathroom. Cormar Soft Focus deep pile carpet to bedrooms.
- Gas fired hot water and under-floor heating.
- Bathrooms feature white sanitary-ware by Villeroy and Boch
- Fitted with colour A/V intercom system linked to main entrance.
- Mains operated smoke and heat detectors.
- Lift Access
- Multipoint locking system are integrated to principle external doors
- Semi-rural location and close to local amenities

Floorplan



First Floor

- PLOT 9
73 sq.m - Approximate Gross Internal Area
- PLOT 10
60 sq.m - Approximate Gross Internal Area
- PLOT 11
106 sq.m - Approximate Gross Internal Area
- PLOT 5
First Floor Mezzanine

Directions

Hindhead is the highest village in the county and is in the heart of the Surrey Hills (an Area of Outstanding Natural Beauty). With the Devil's Punch Bowl, a huge natural amphitheatre gouged out of the earth which is now a site of special scientific interest and a beauty spot enjoyed by all, on the doorstep as well as excellent golf courses and easy access to the A3 with links to London and the South Coast.



IMPORTANT NOTICE TO PURCHASERS: We endeavour to make our sales particulars accurate and reliable, however, they do not constitute or form part of an offer or any contract and none is to be relied upon as statements of representation or fact. The services, systems and appliances listed in this specification have not been tested by us and no guarantees as to their operating ability or efficiency are given. All measurements have been taken as guide to prospective buyers only, and are not precise. If you require clarification or further information on any points, please contact us, especially if you are travelling some distance to view.